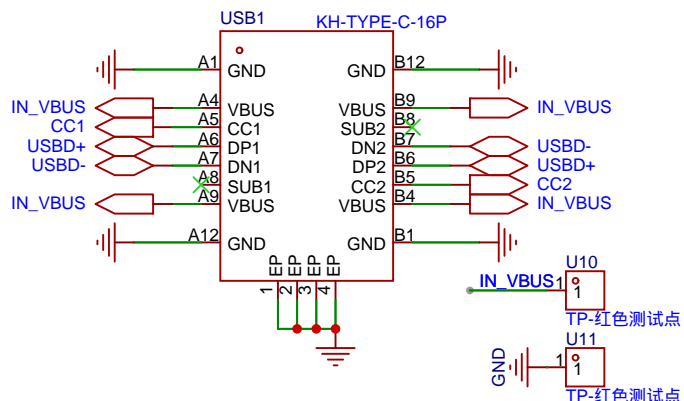
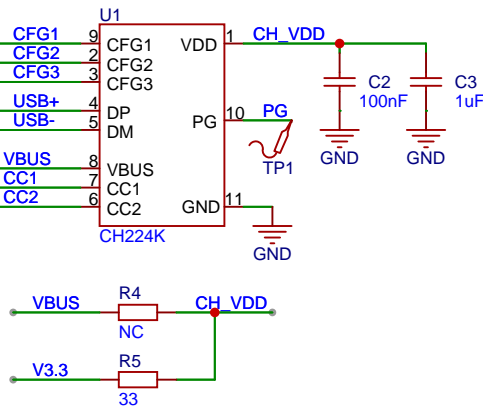


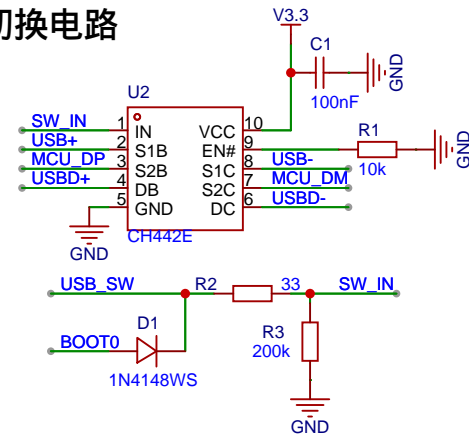
USB Type-C输入



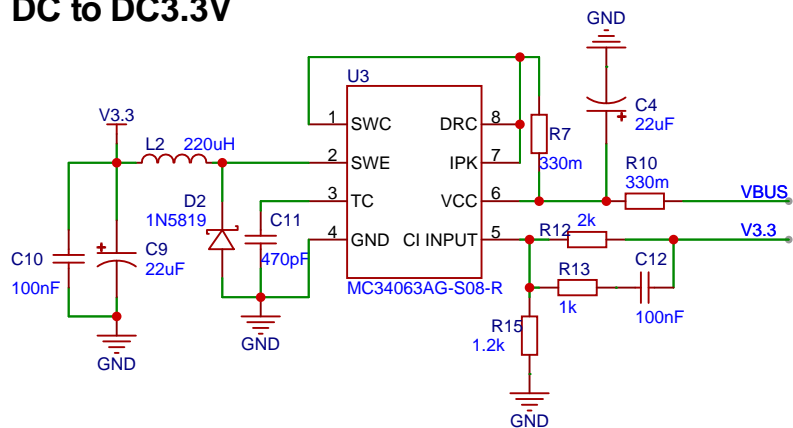
PD3.0 BC1.2



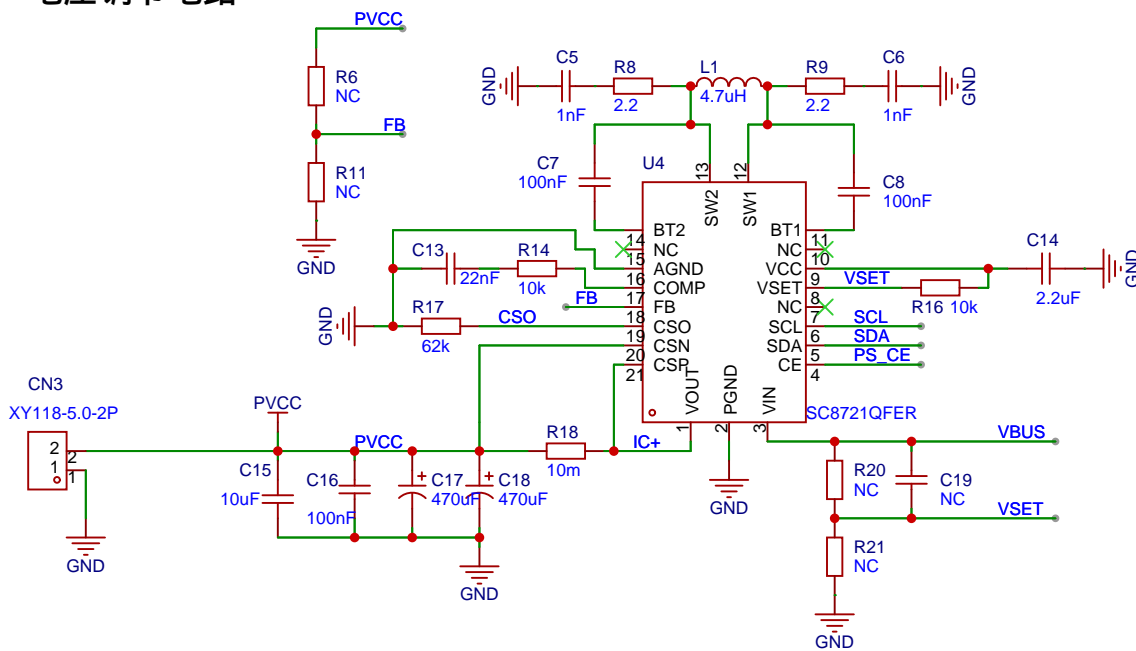
USB 切换电路



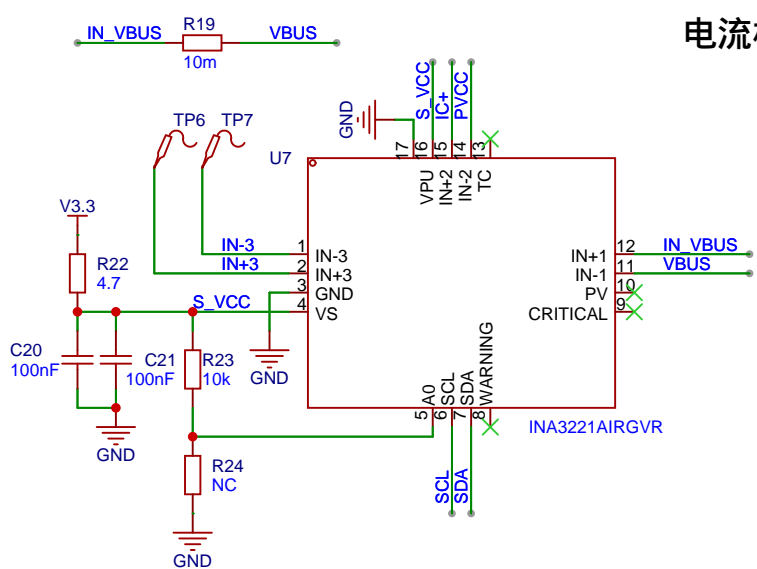
DC to DC3.3V



电压调节电路



电流检测电路



原理图

Schematic1_1

更新日期

2024-01-27

图页

P1

创建日期

2024-01-10

绘制

物料编码

审阅

USB可编程电源/功率监测仪

版本

尺寸

页

1

共

2

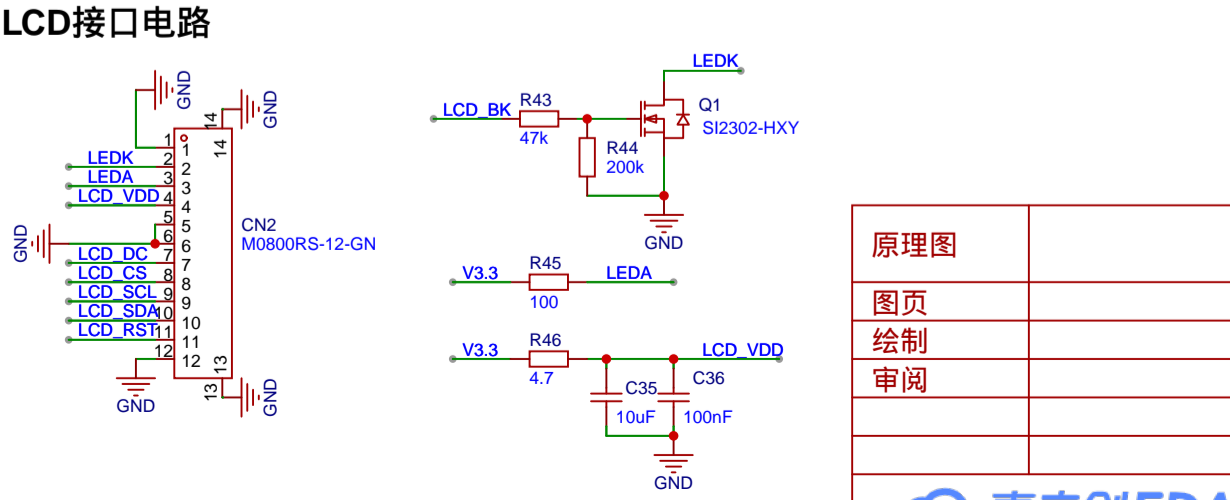
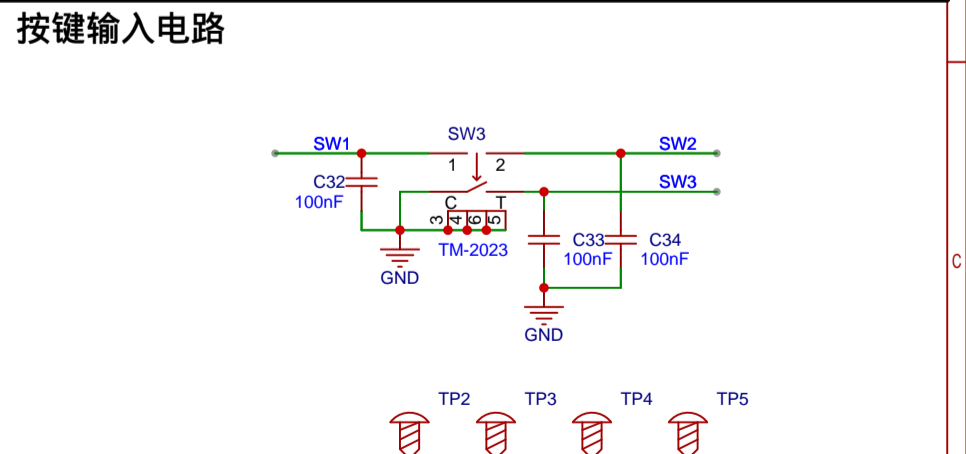
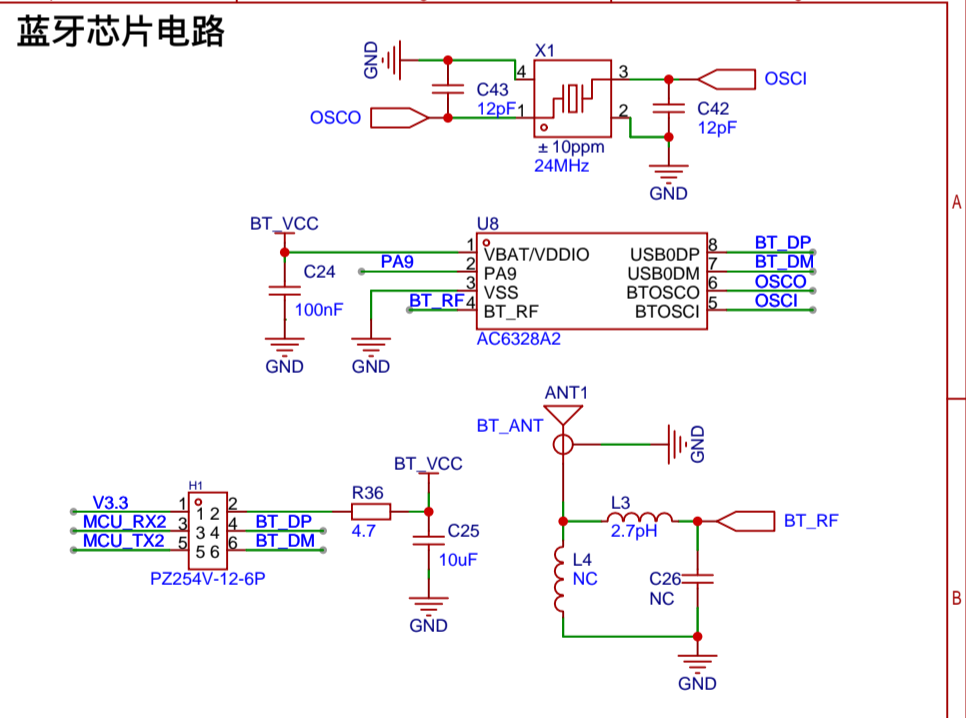
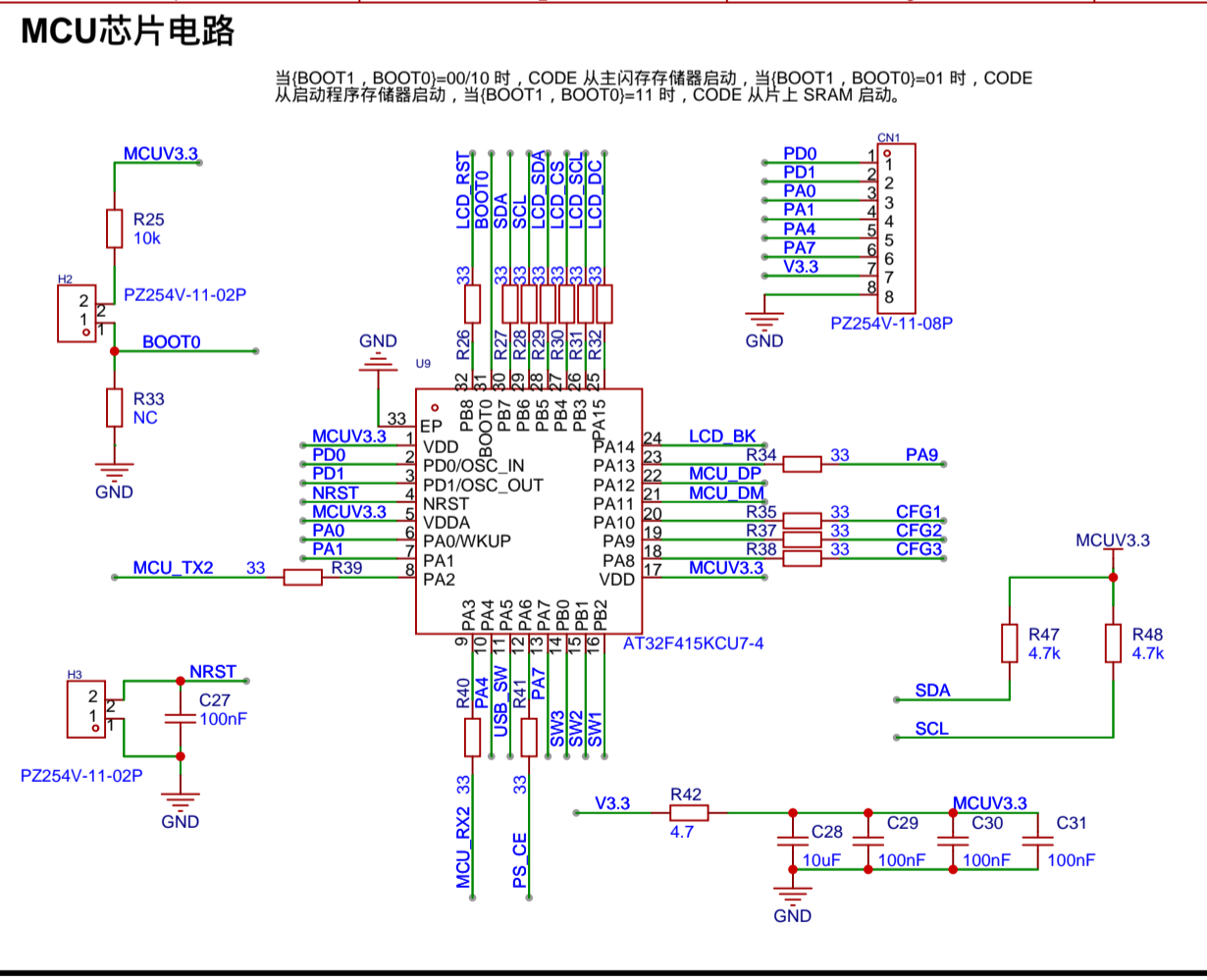
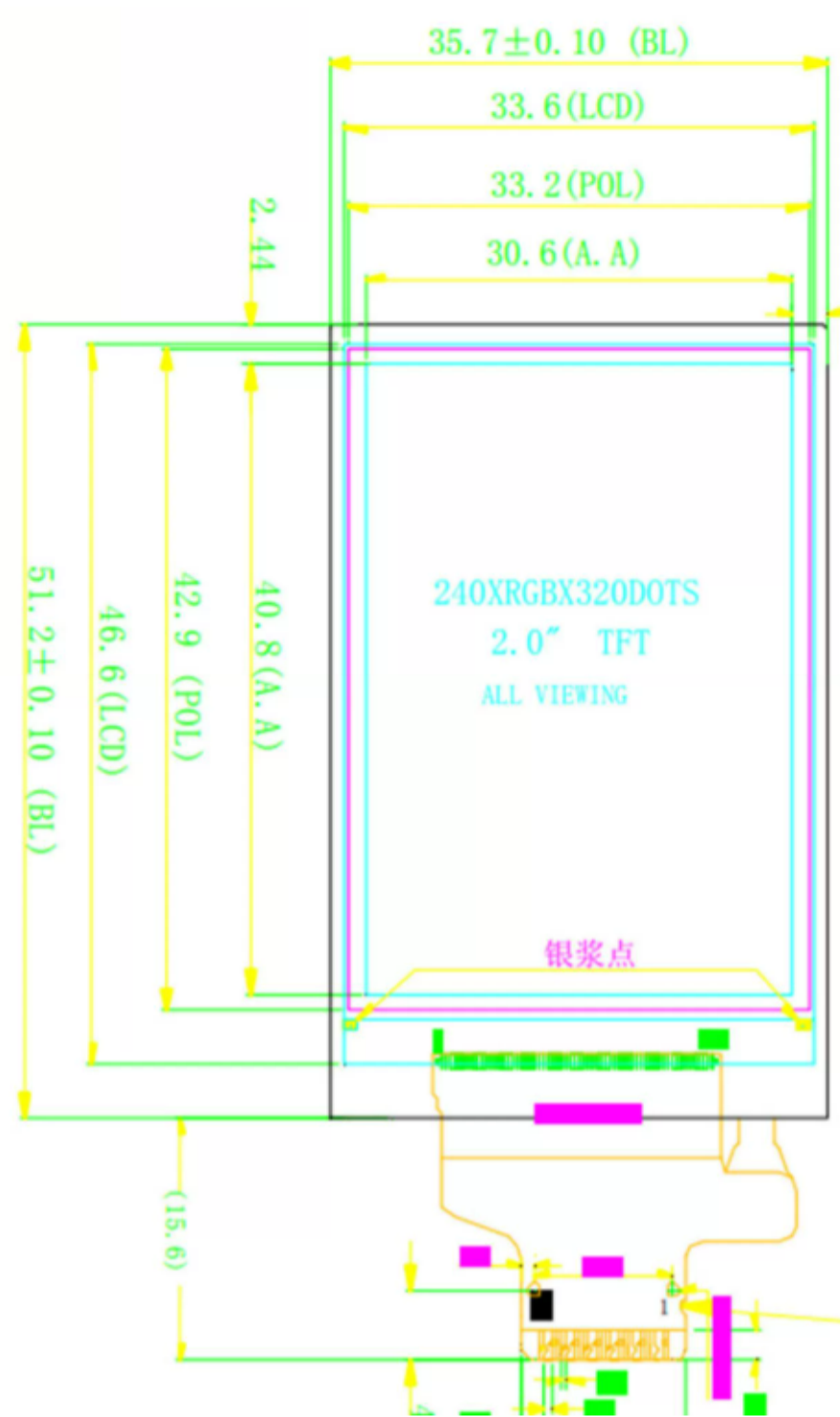
嘉立创EDA

V1.0

A4

嘉立创EDA

NO.	Symbol	Description
1	GND	Power Ground
2	LEDK	LED Cathode
3	LEDA	LED Anode
4	VDD	Power Supply for Analog
5	GND	Power Ground
6	GND	Power Ground
7	D/C	Display data/command selection pin in 4-line serial interface.
8	CS	Chip selection pin;Low enable,high disable.
9	SCL	This pin is used to be serial interface clock
10	SDA	SPI interface input/output pin. the data is latched on the rising edge of the SCL signal.
11	RESET	This signal will reset the device and it must be applied to properly initialize the chip.Signal is active low.
12	GND	Power Ground



原理图	Schematic1_1		更新日期	2024-01-30
图页	MCU		创建日期	2024-01-10
绘制	物料编码			
审阅	USB可编程电源/功率监测仪			
版本		尺寸	页 2 共 2	
V1.0		A4	嘉立创EDA	

