

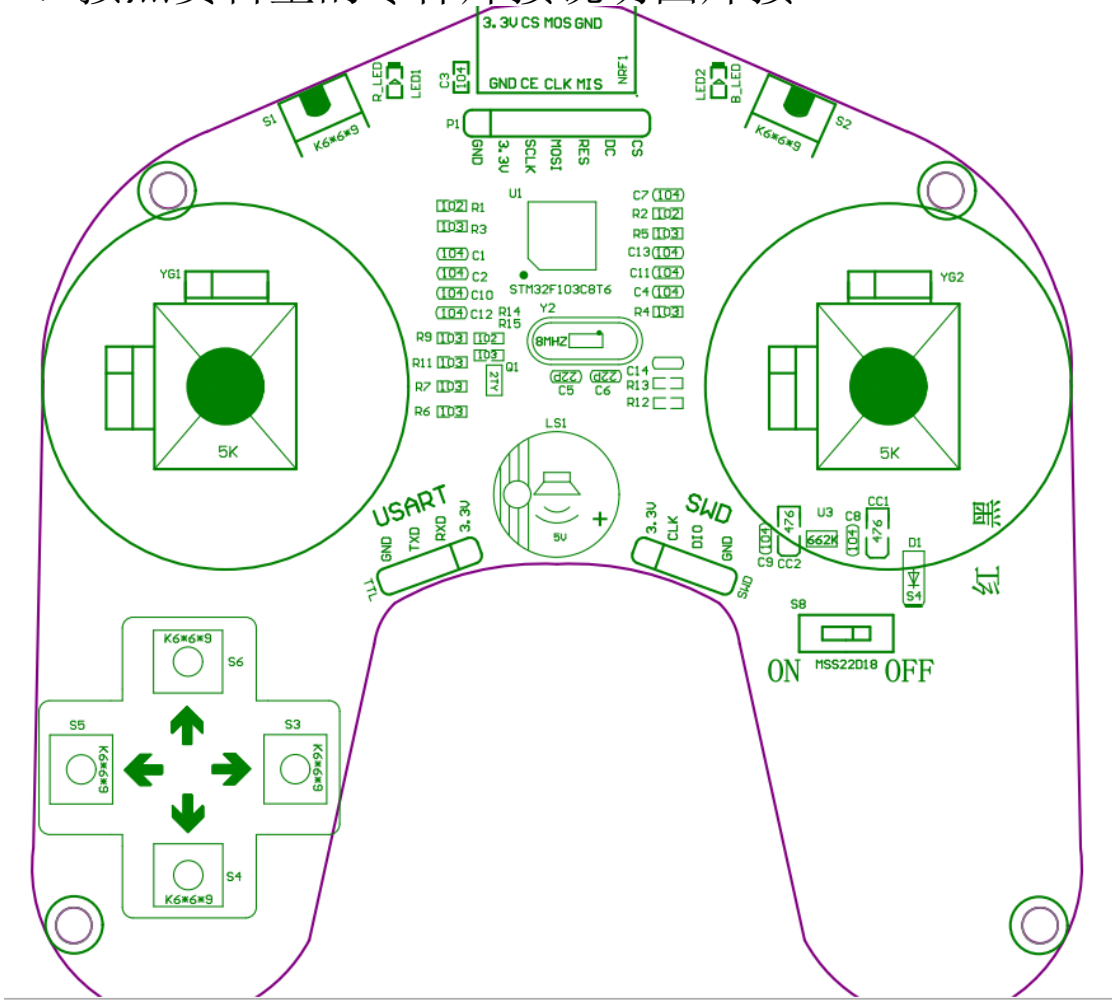
# STM32遥控器焊接说明书

焊接遥控器的学者，为了你焊接成功，请严格看清楚这个说明书来焊接！焊接完 焊接技术就会提升了！

## 1、PCB空板子



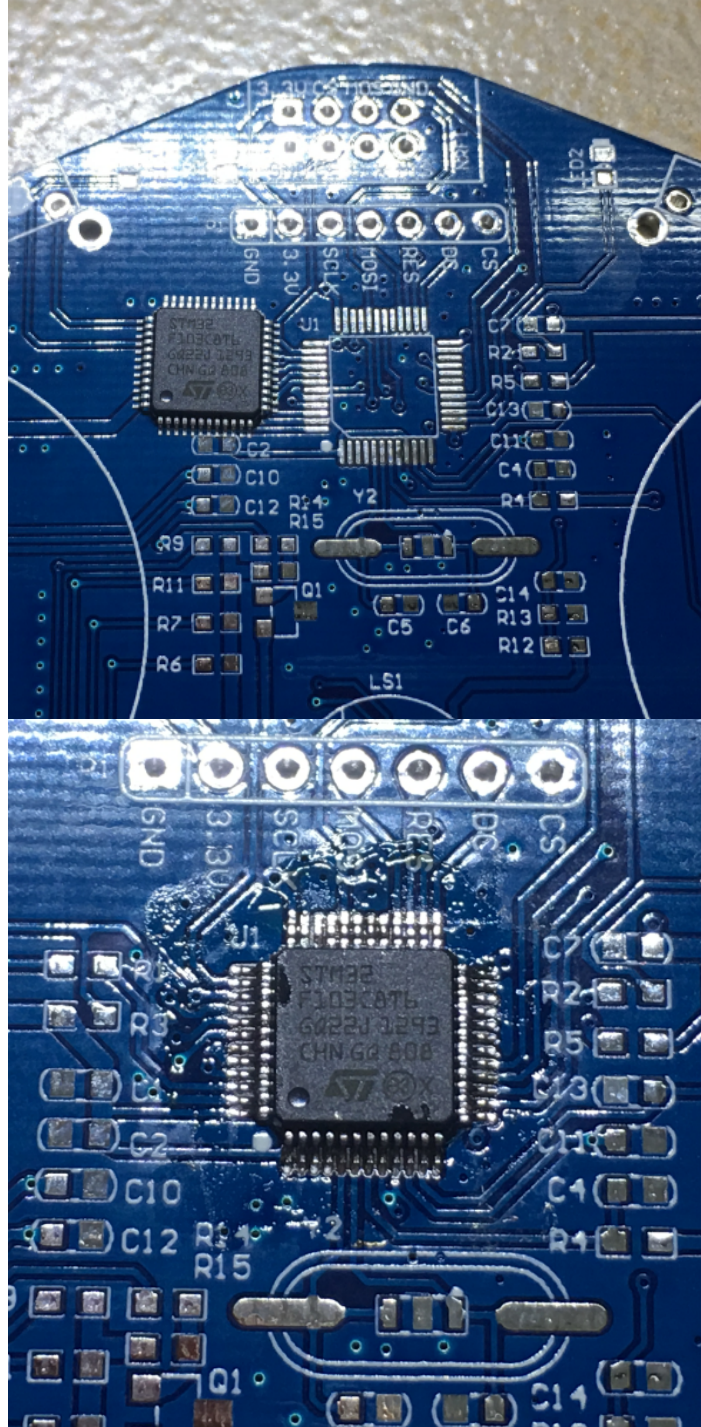
## 2、按照资料里的零件焊接说明图焊接



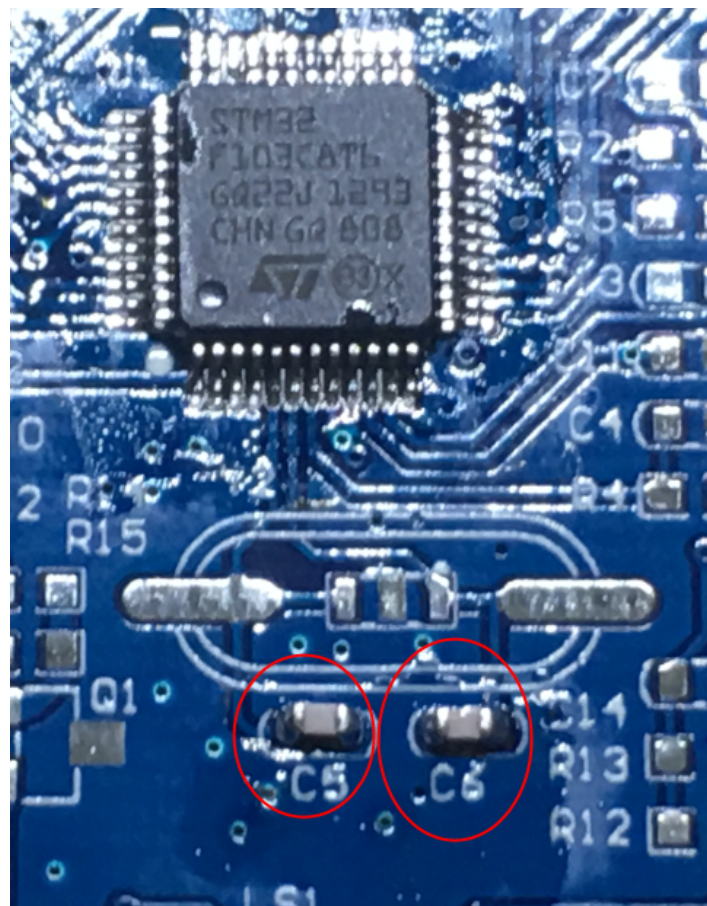
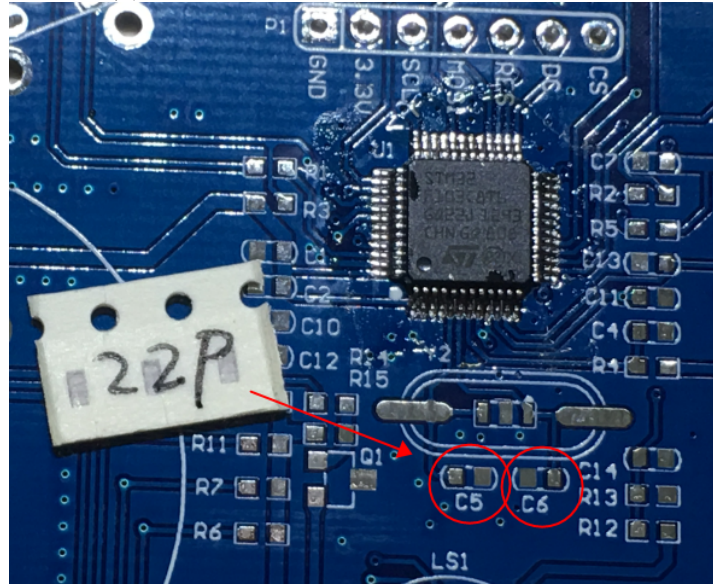


### 3、焊接主控 STM32F103C8T6芯片 U1

芯片上有个圆点为芯片1脚，这个圆点对板子上白色的圆点就可以了！

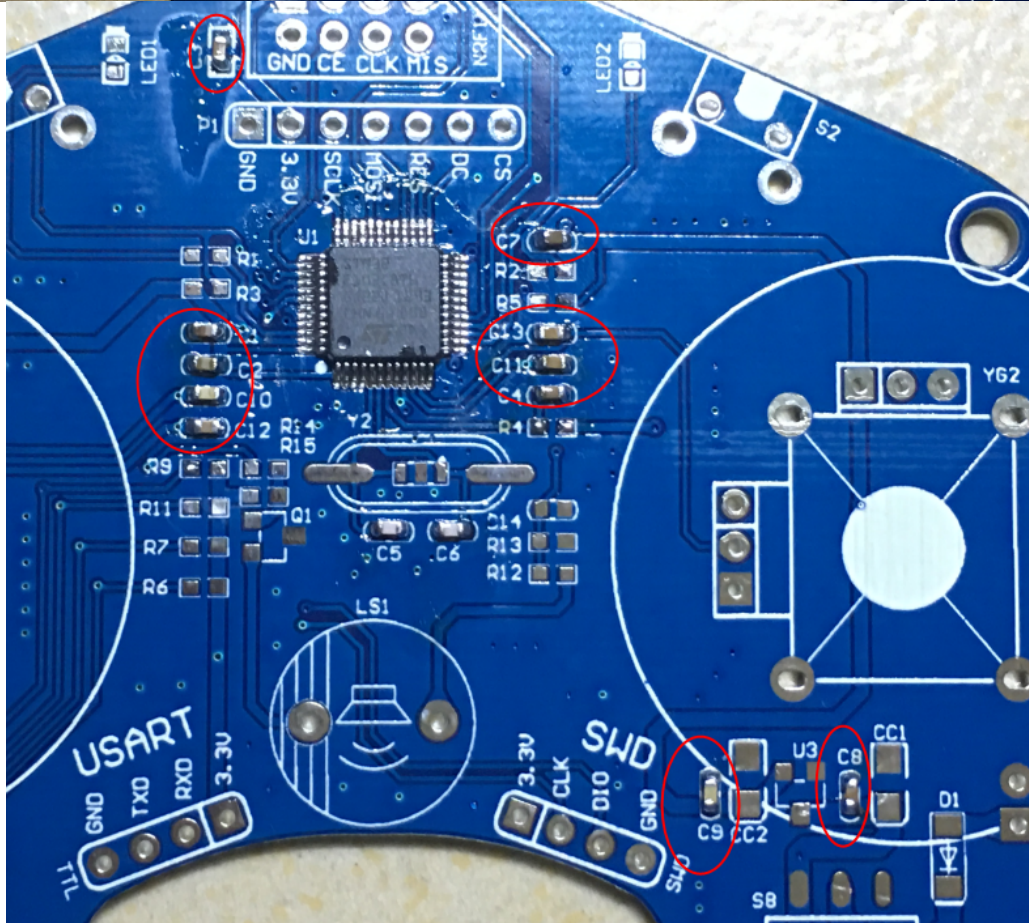
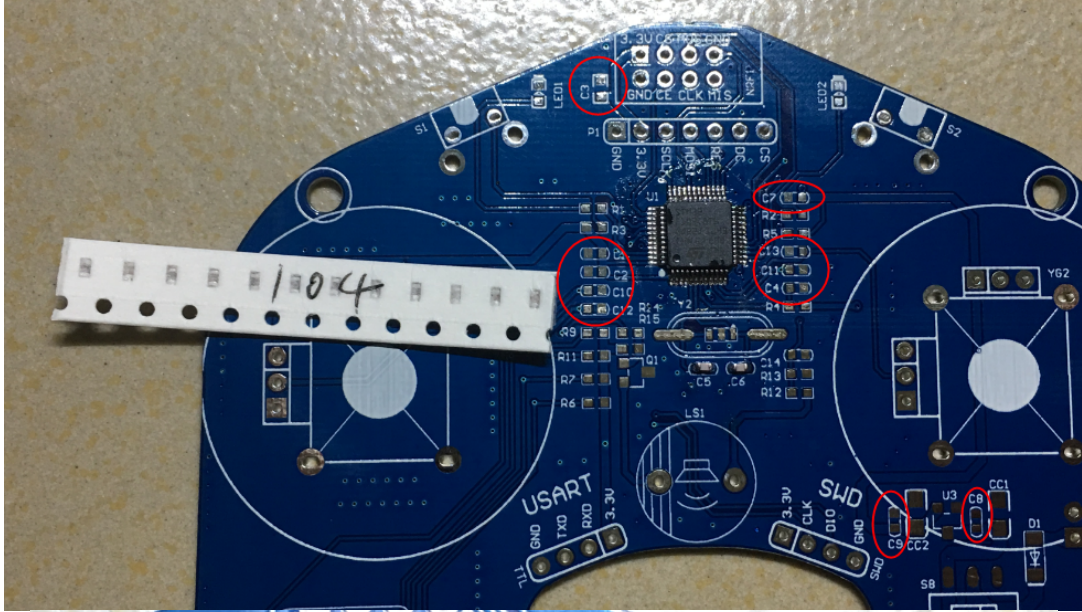


#### 4、焊接22PF电容C5 C6



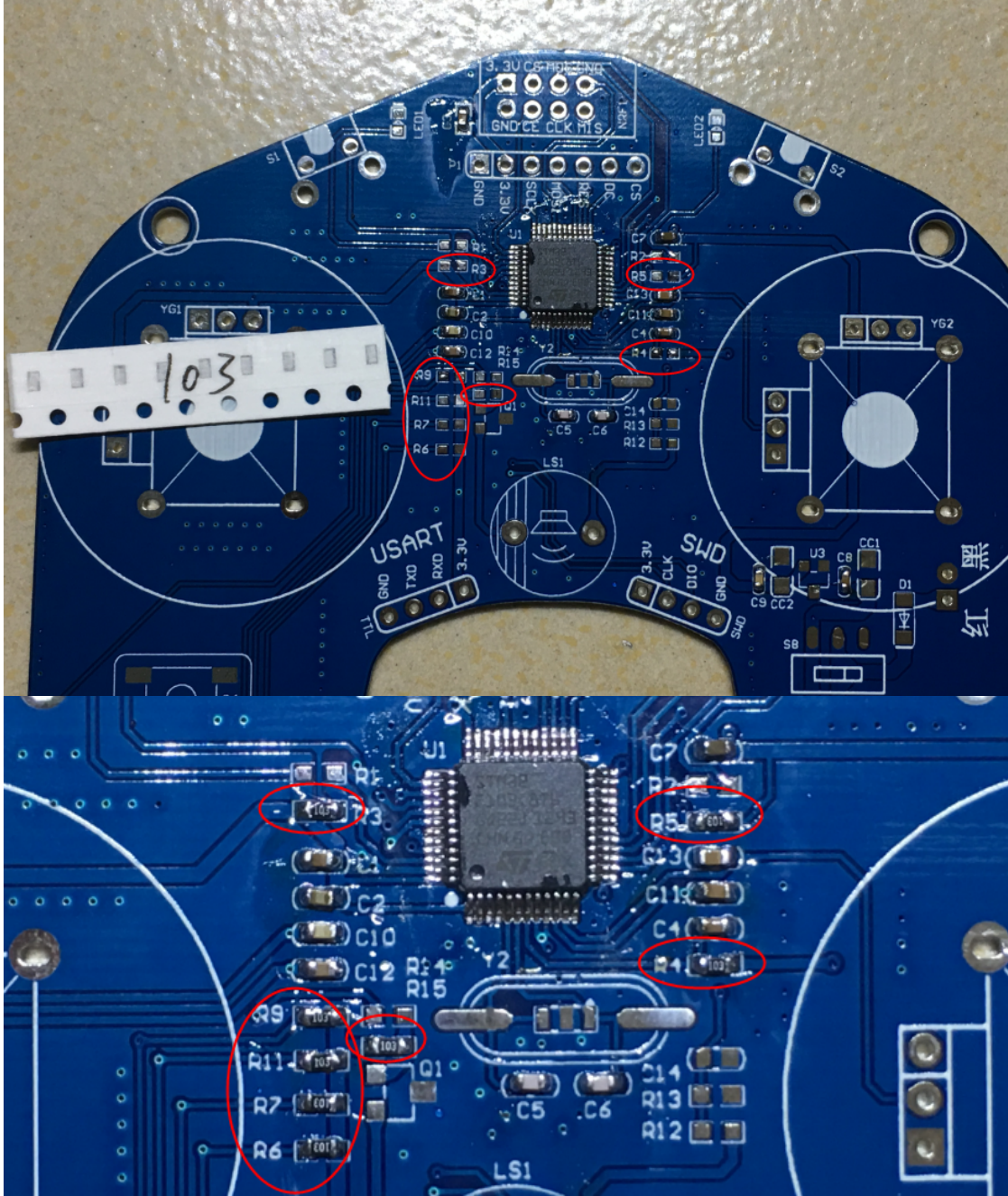


5、焊接104 (0.1UF) 电容 C1 C2 C3 C4 C7 C8 C9 C10 C11 C12 C13 焊接的时候不要短路了



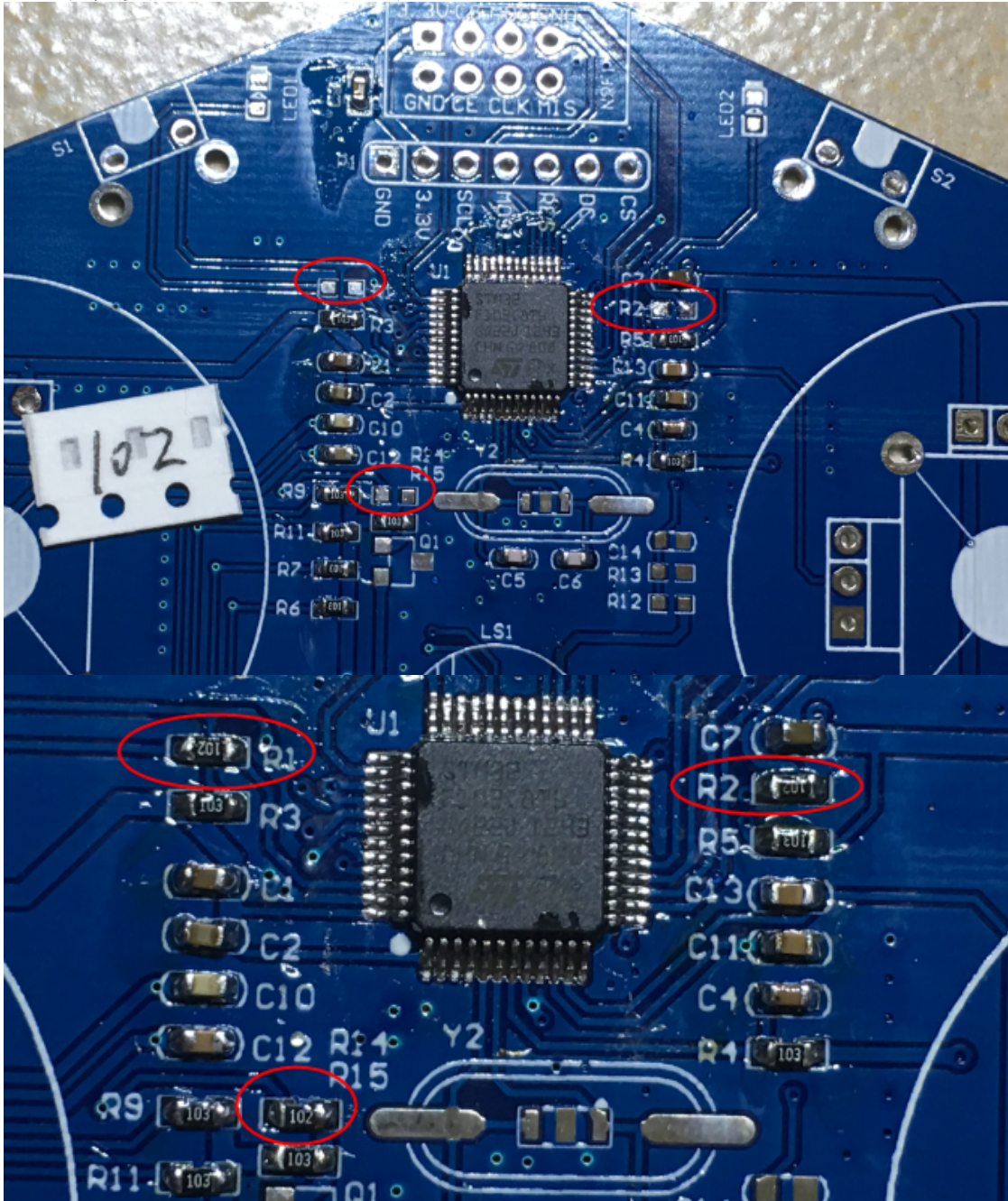


6、焊接103（10K）电阻 R3 R4 R5 R6 R7 R9 R11 R15

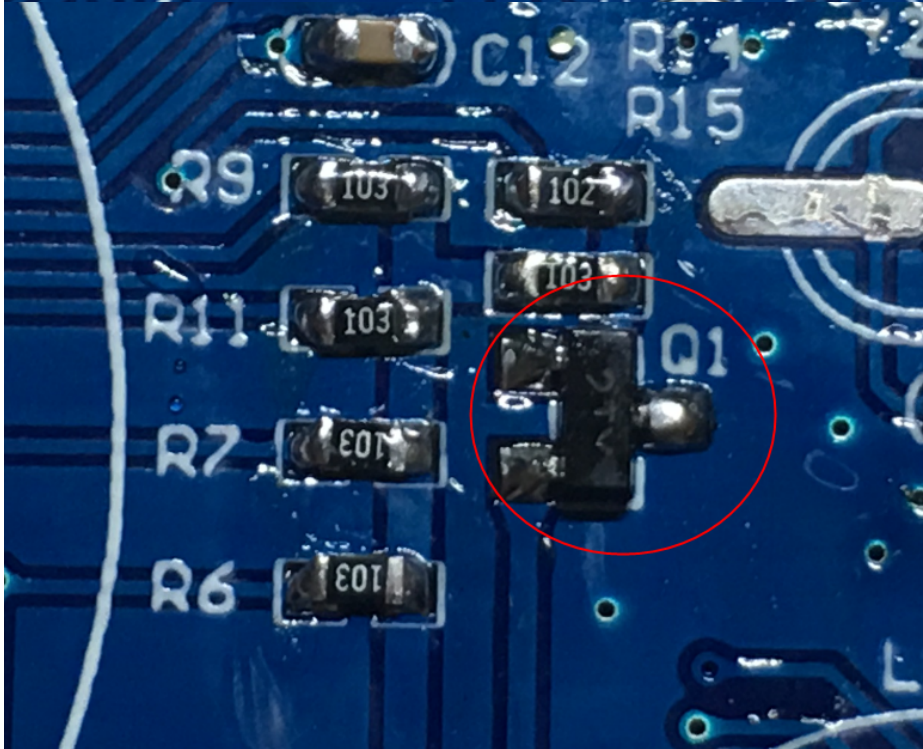
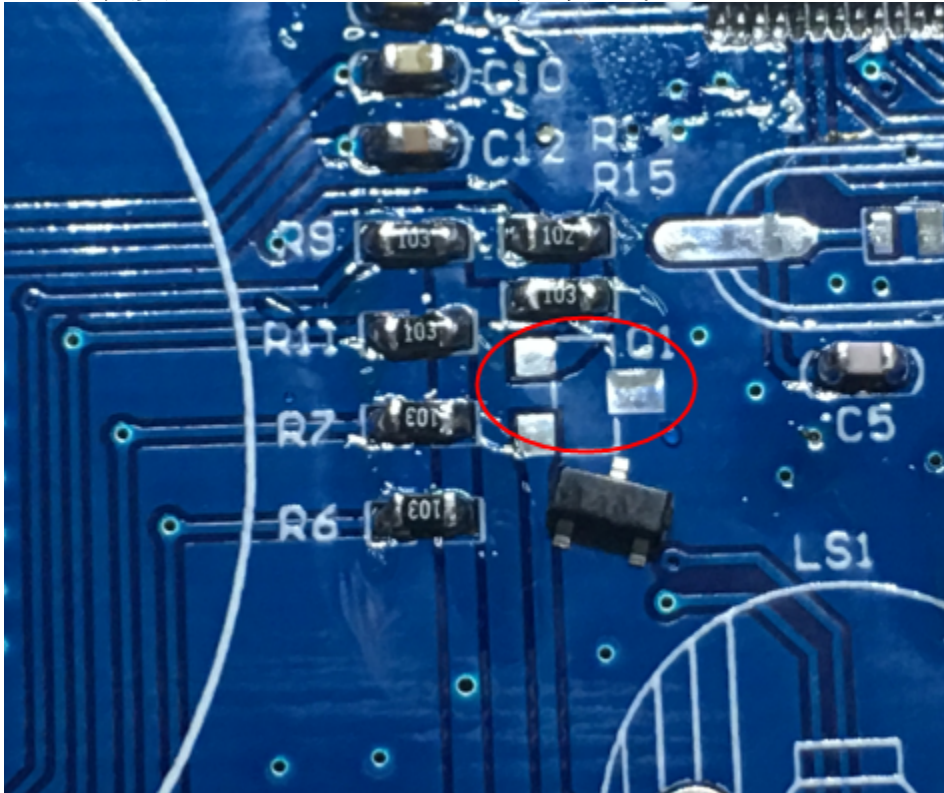




7、焊接102 (1K) 电阻 R1 R2 R14

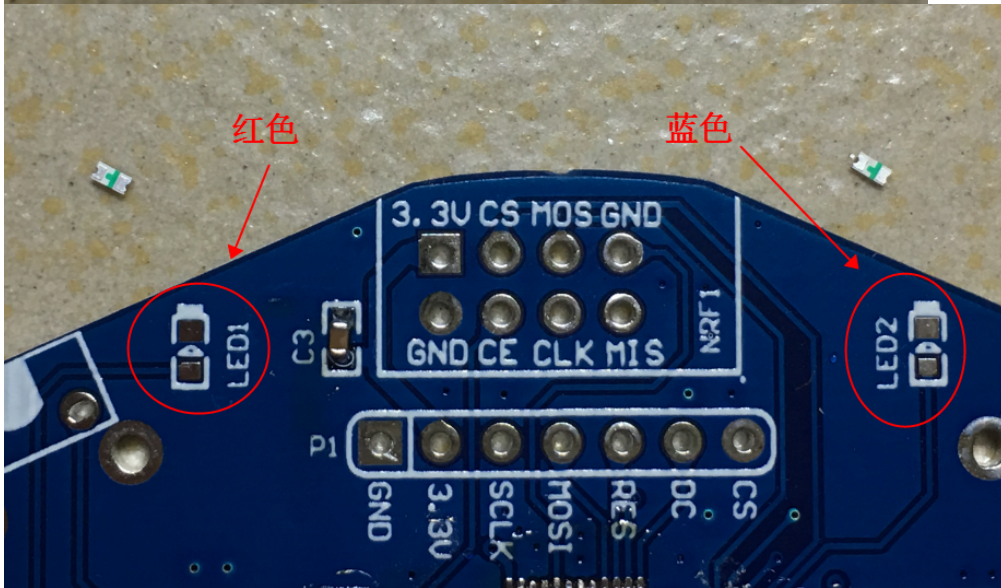
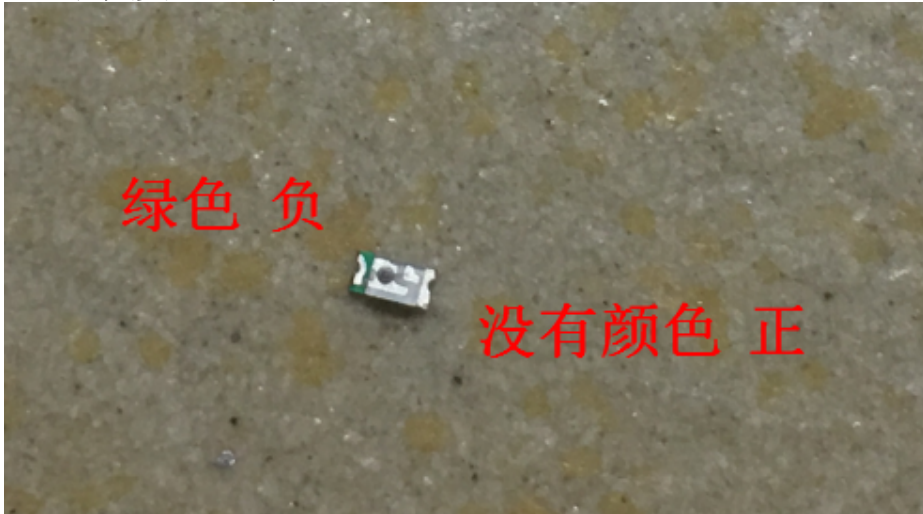


8、焊接2TY (S8550) 三极管 Q1

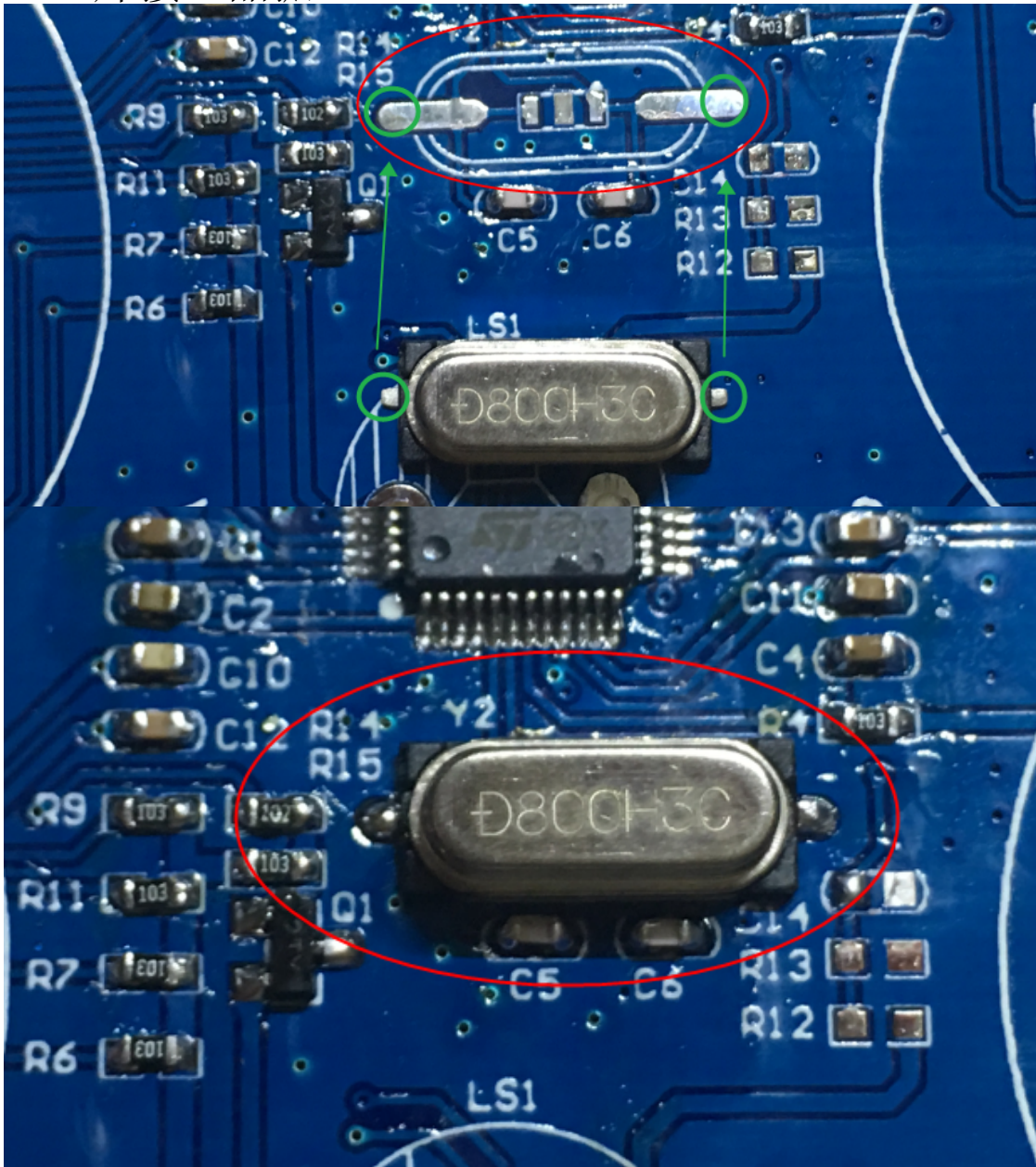




### 9、焊接LED灯 红色 蓝色 LED1 LED2

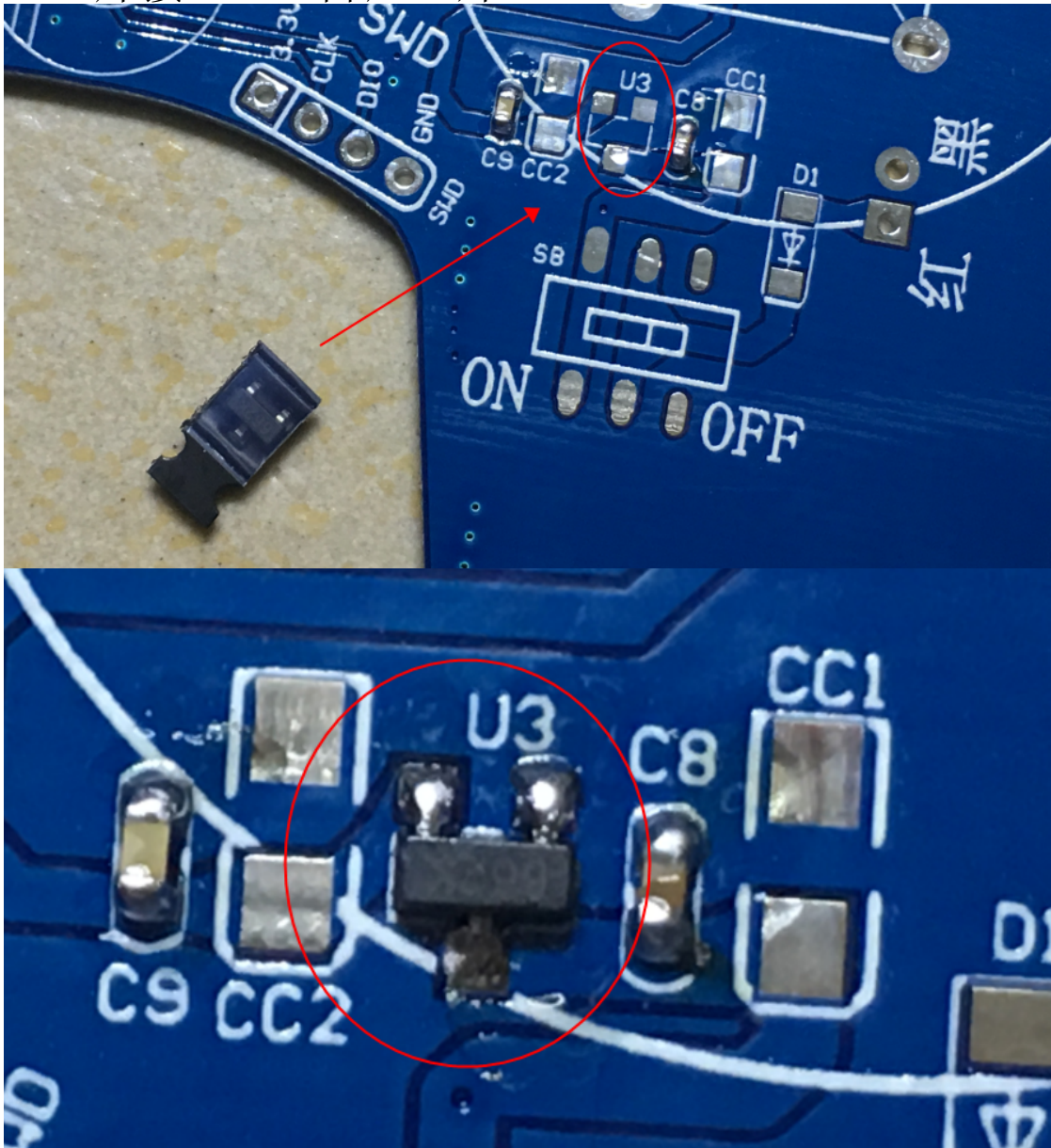


## 10、焊接8M晶振 Y2

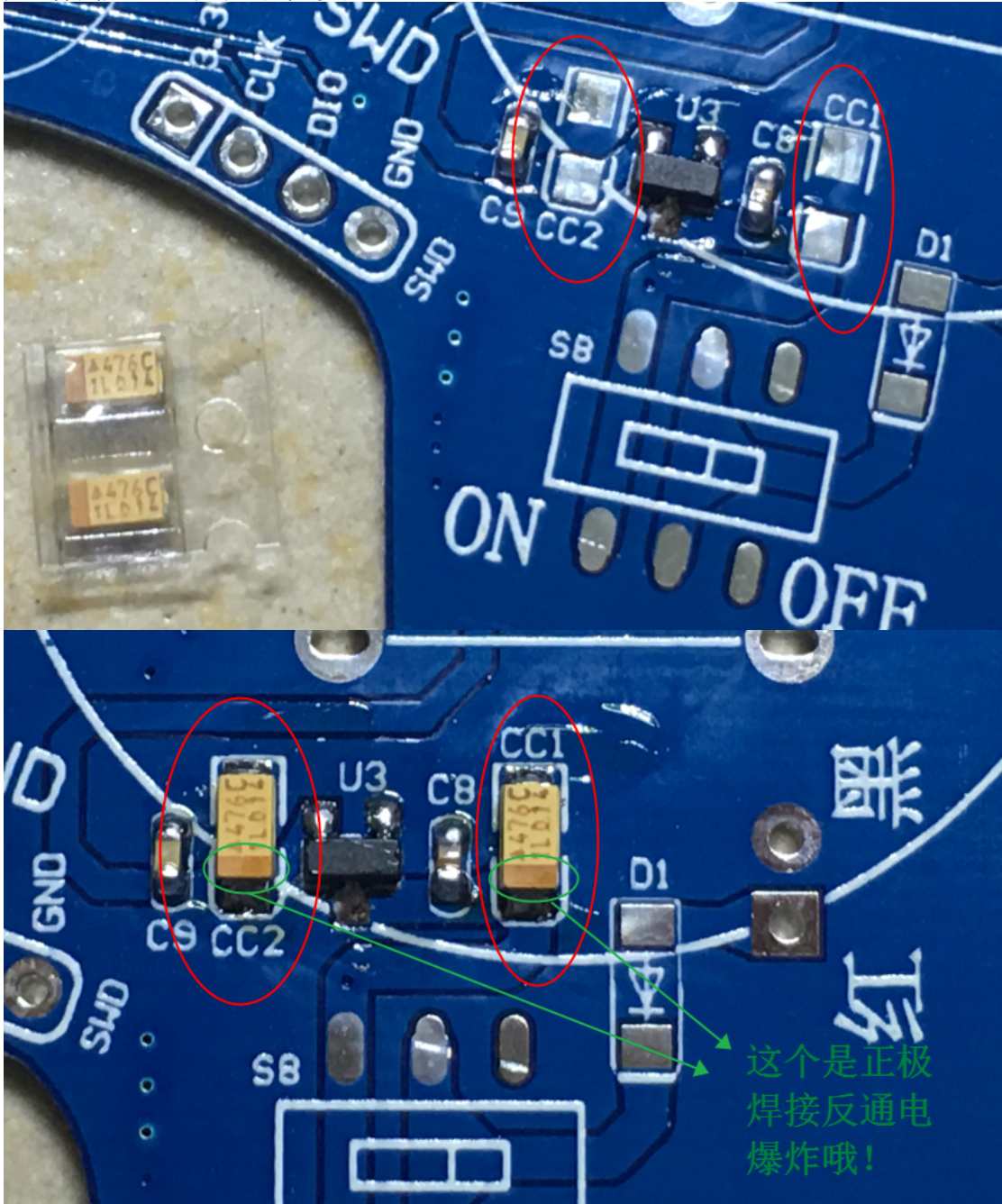




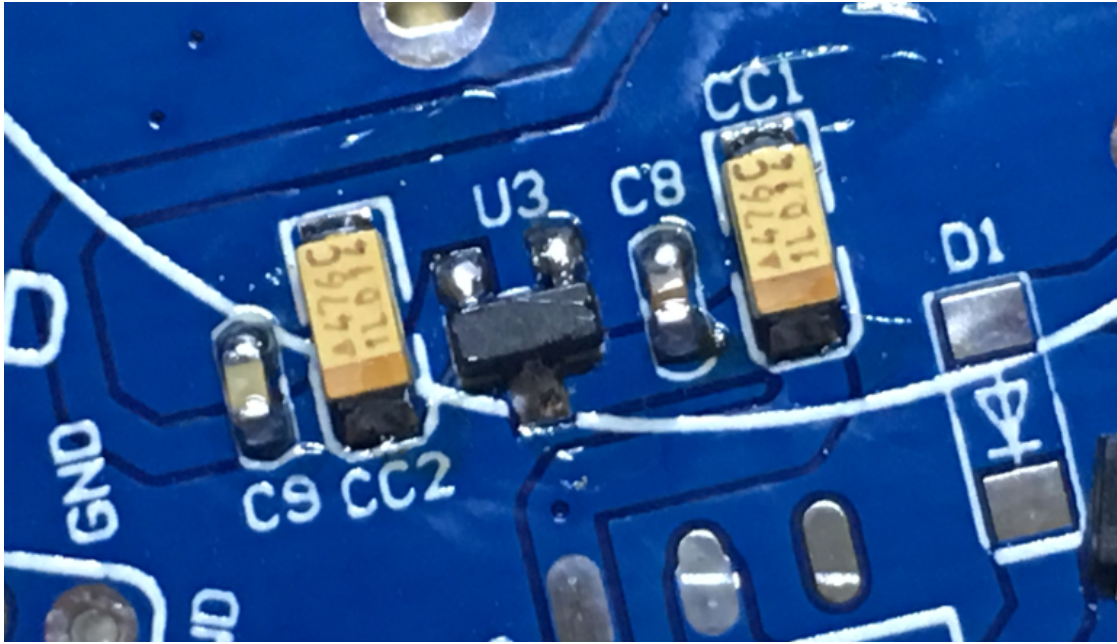
11、焊接 662K 降压芯片 U3



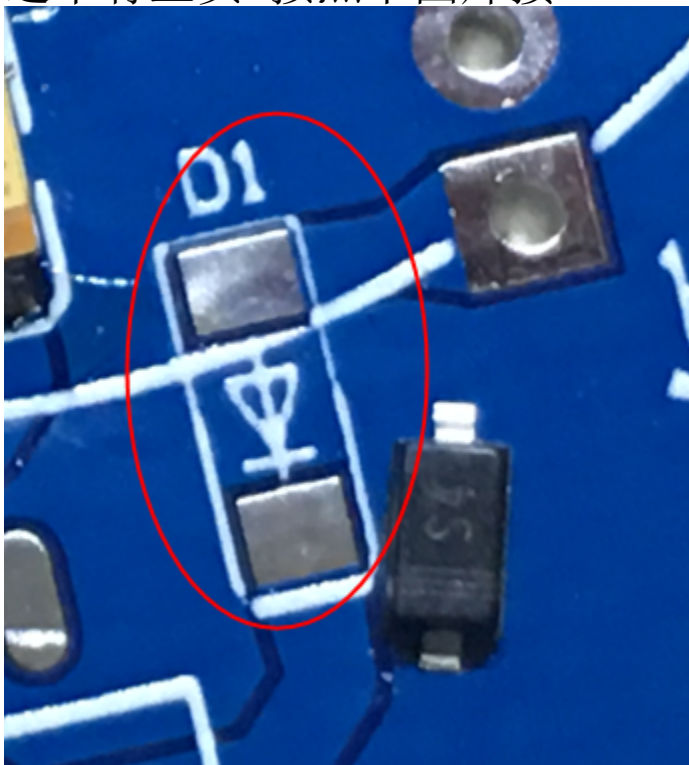
12、焊接 476 (47UF) 钽电容 CC1 CC2  
这个电容分正负 如果焊反通电爆炸！注意方向！  
严格按照下图焊接！

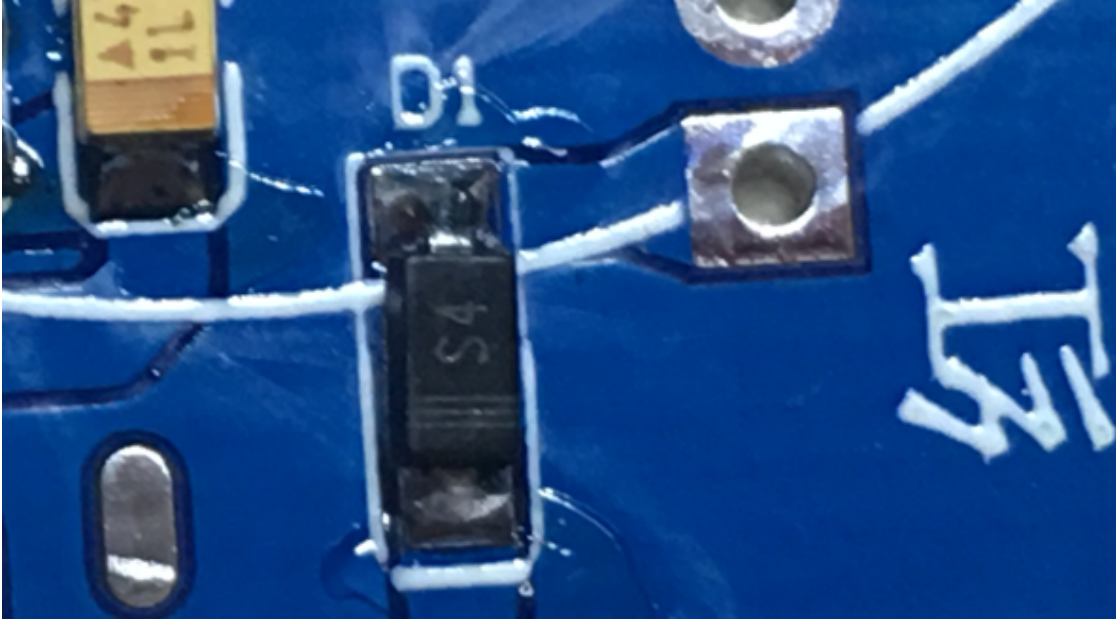




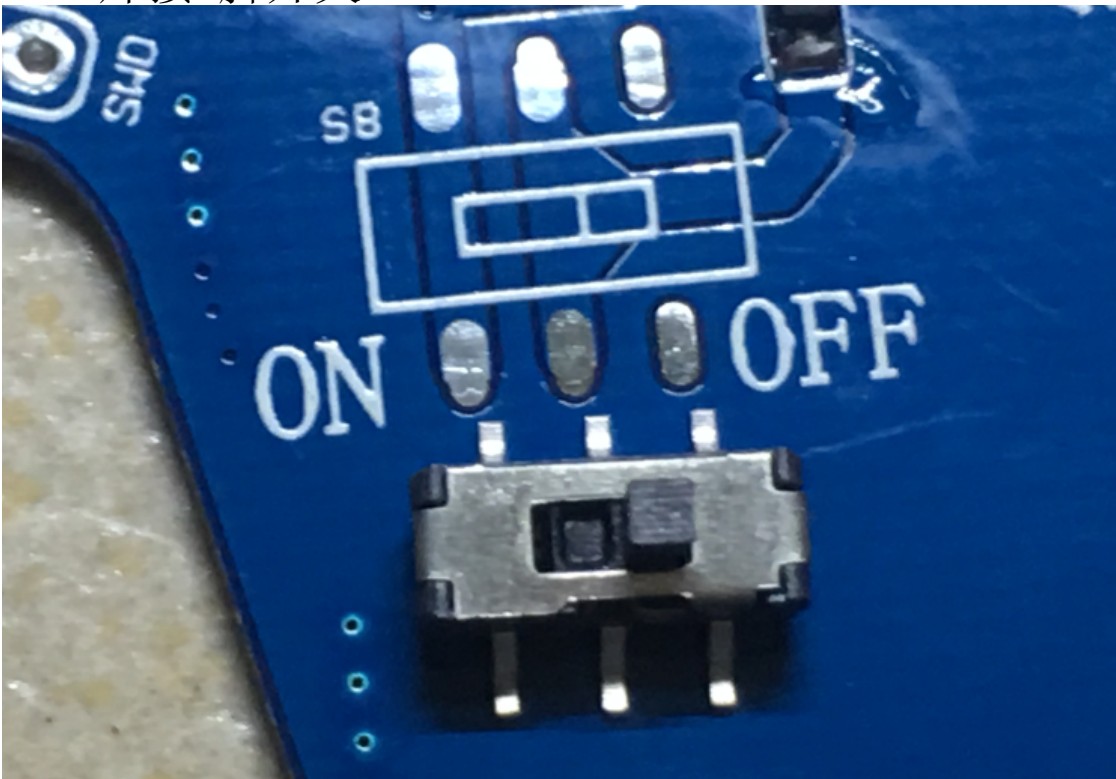


13、焊接S4二极管 D1  
这个有正负 按照下图焊接

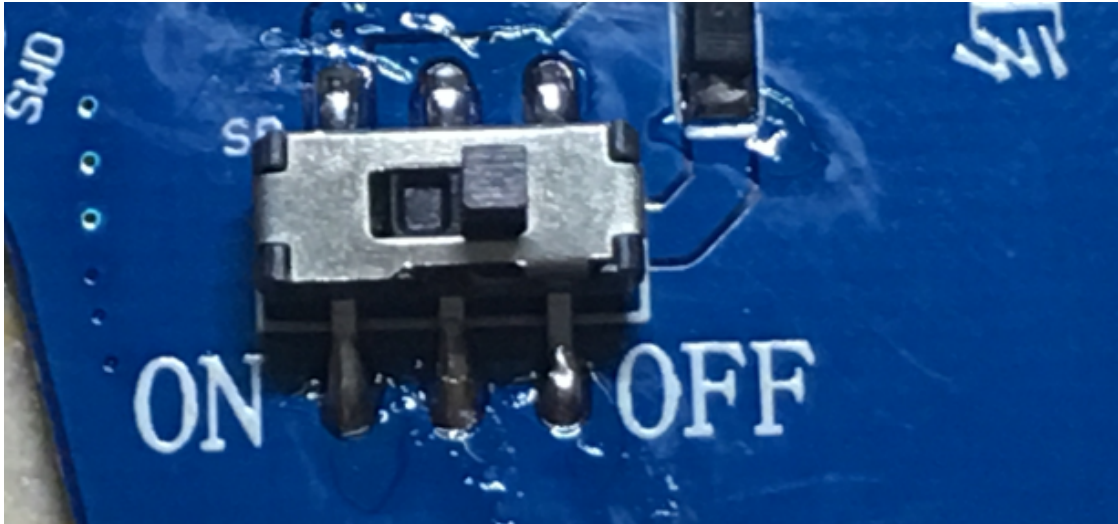




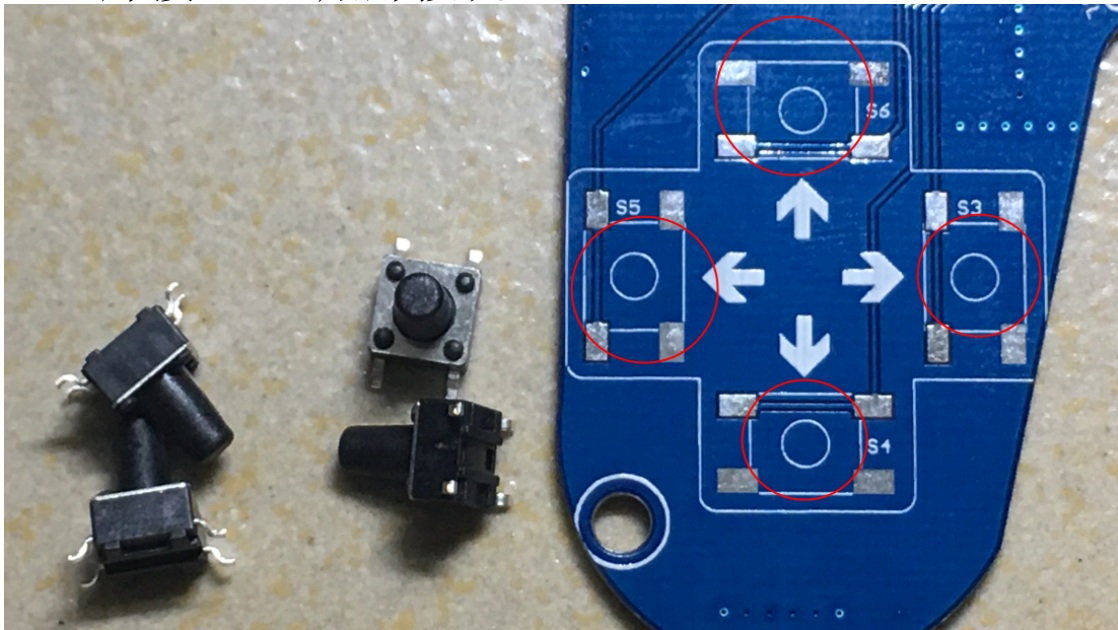
14、焊接6脚开关 SB

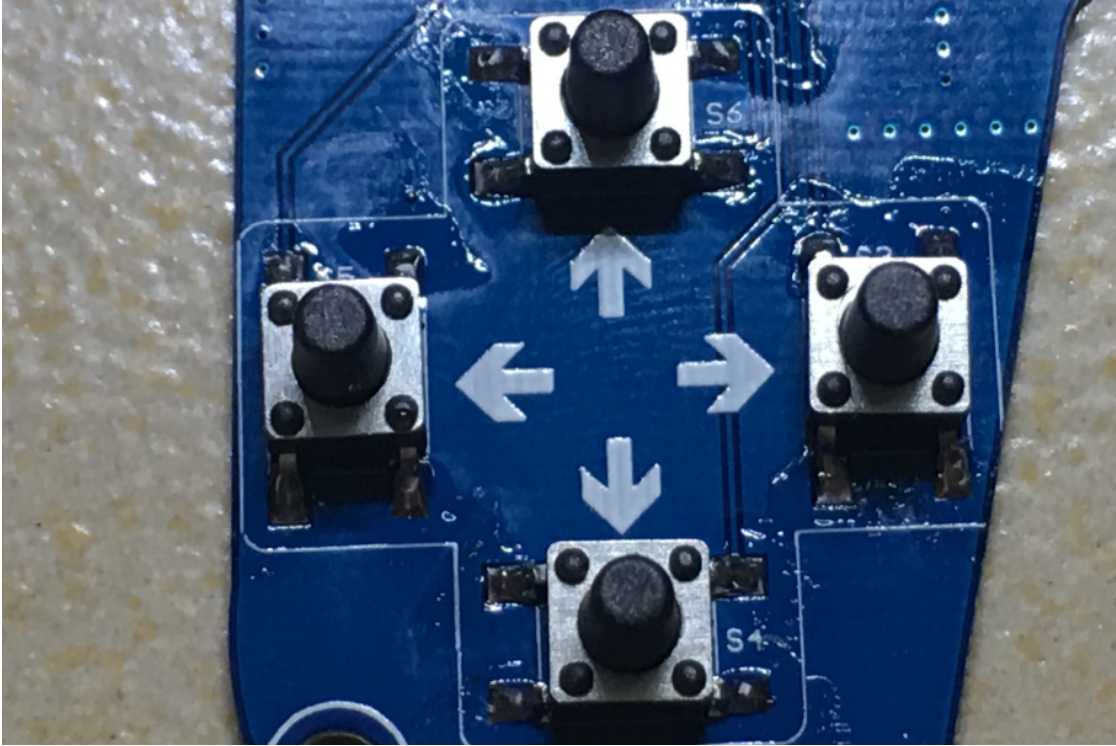




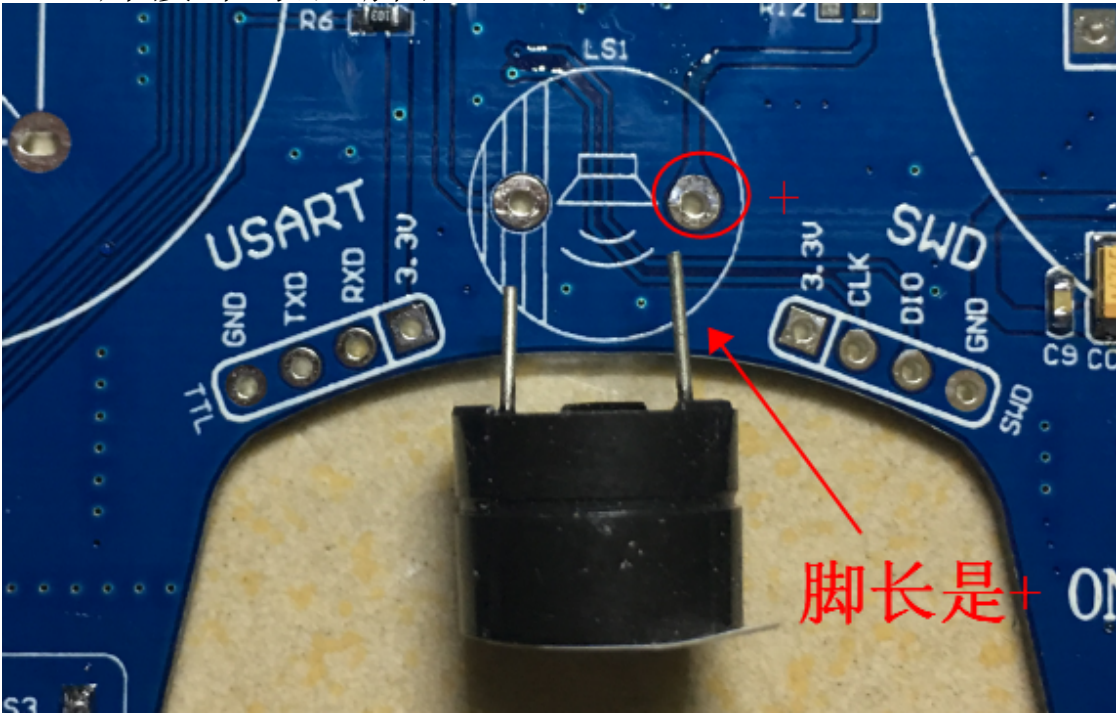


15、焊接6\*6\*9贴片按键 S3 S4 S5 S6





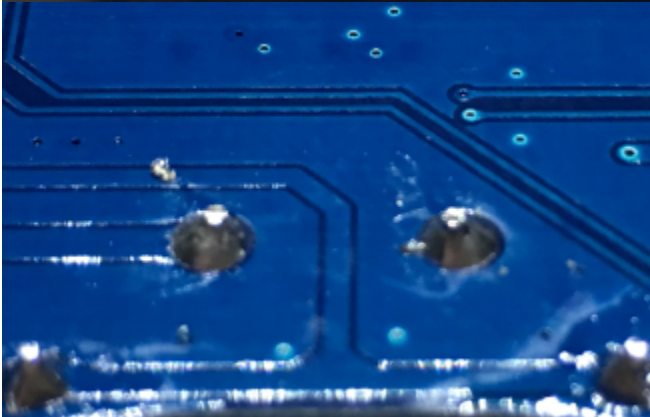
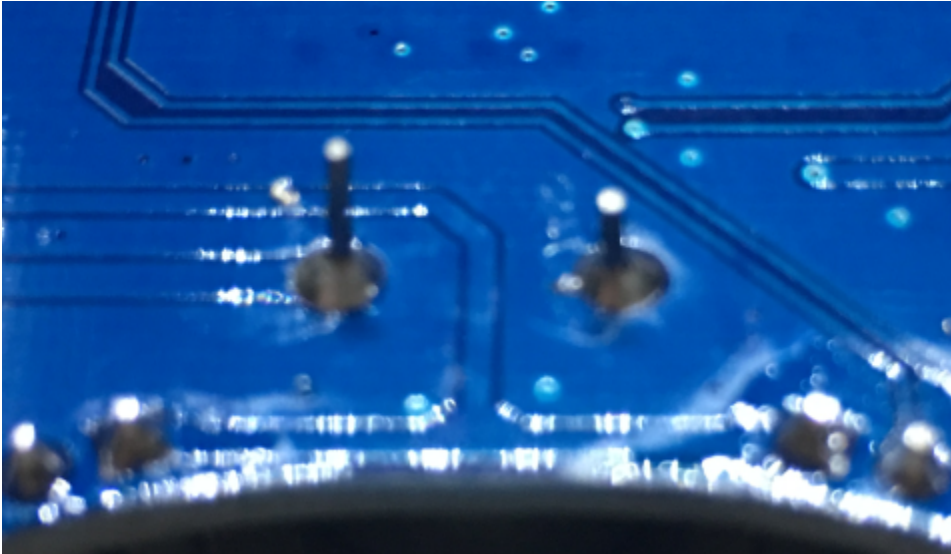
16、焊接蜂鸣器 脚长正 LS1



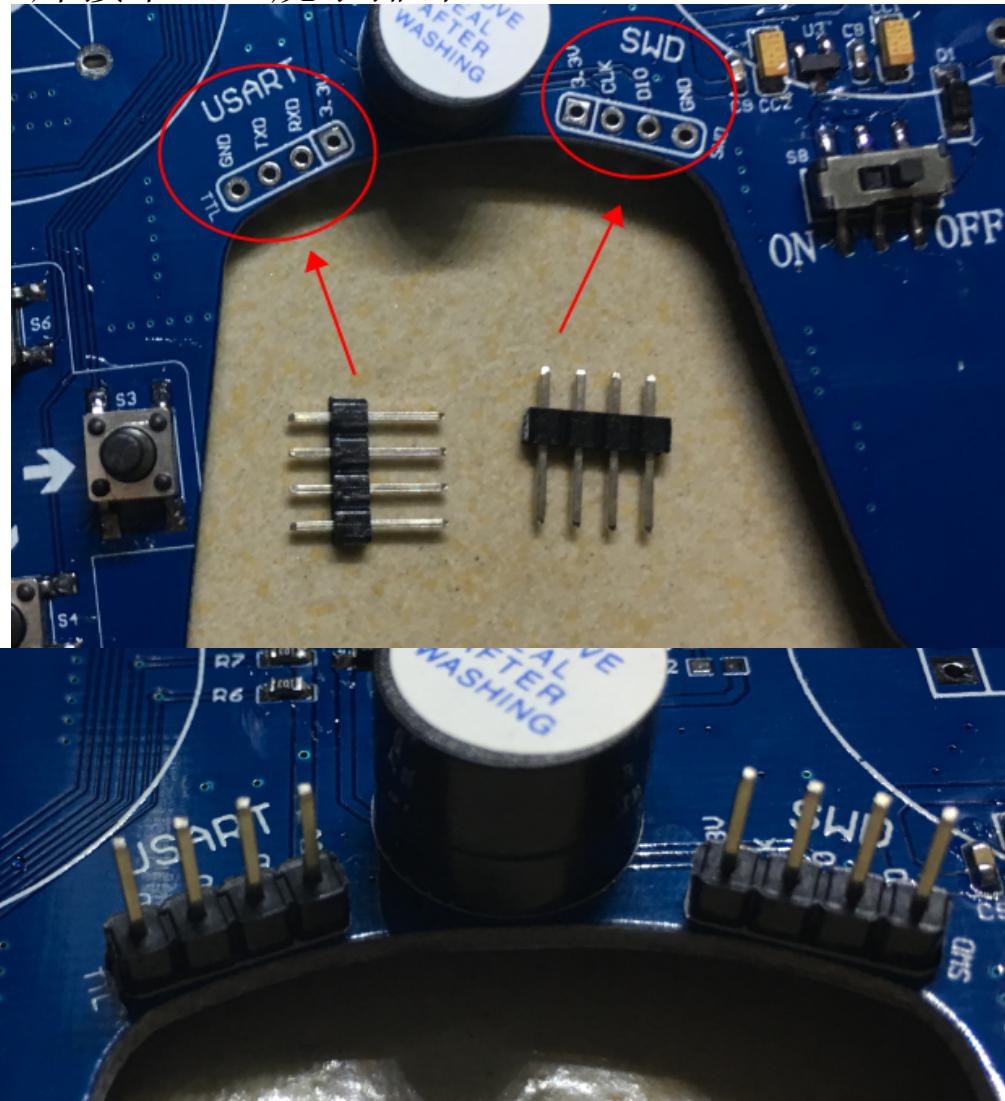




蜂鸣器要剪脚

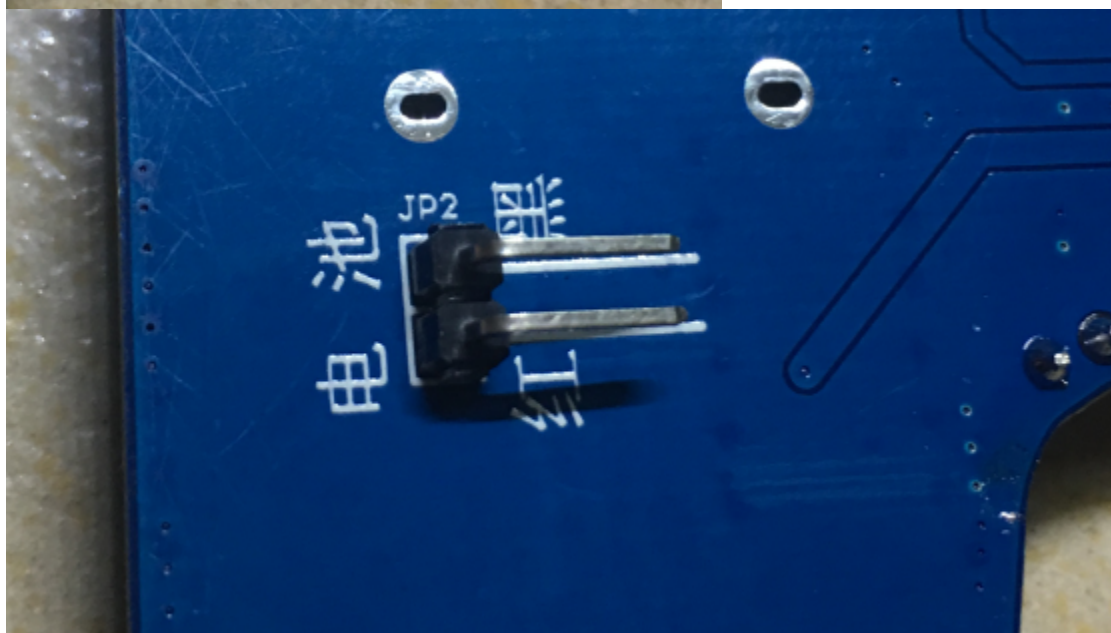


# 17、焊接串口、烧录排针 USART SWD

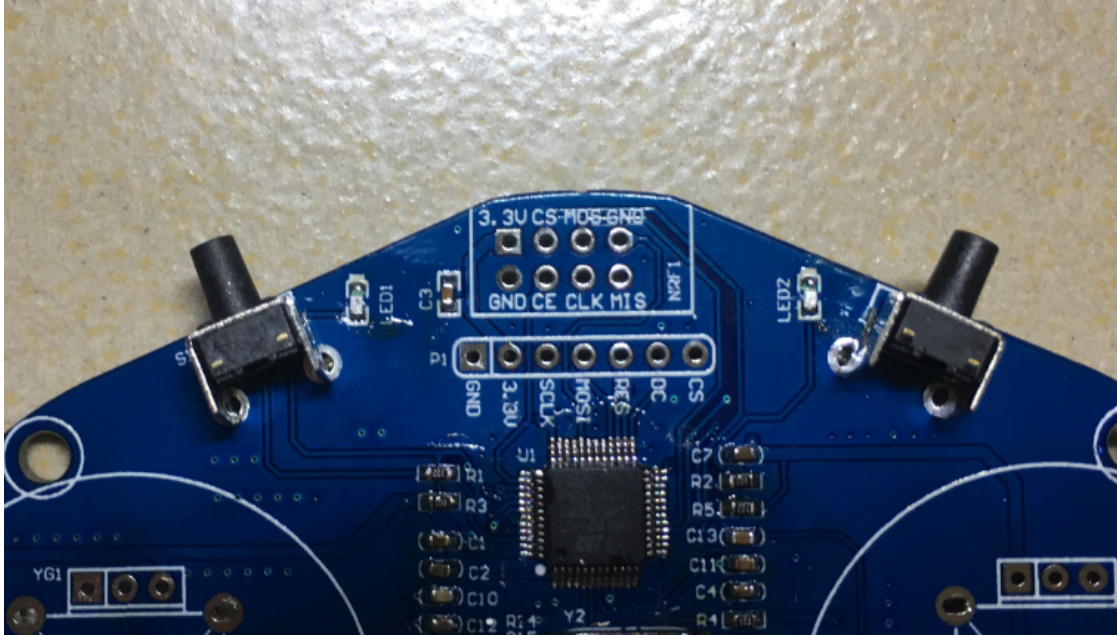
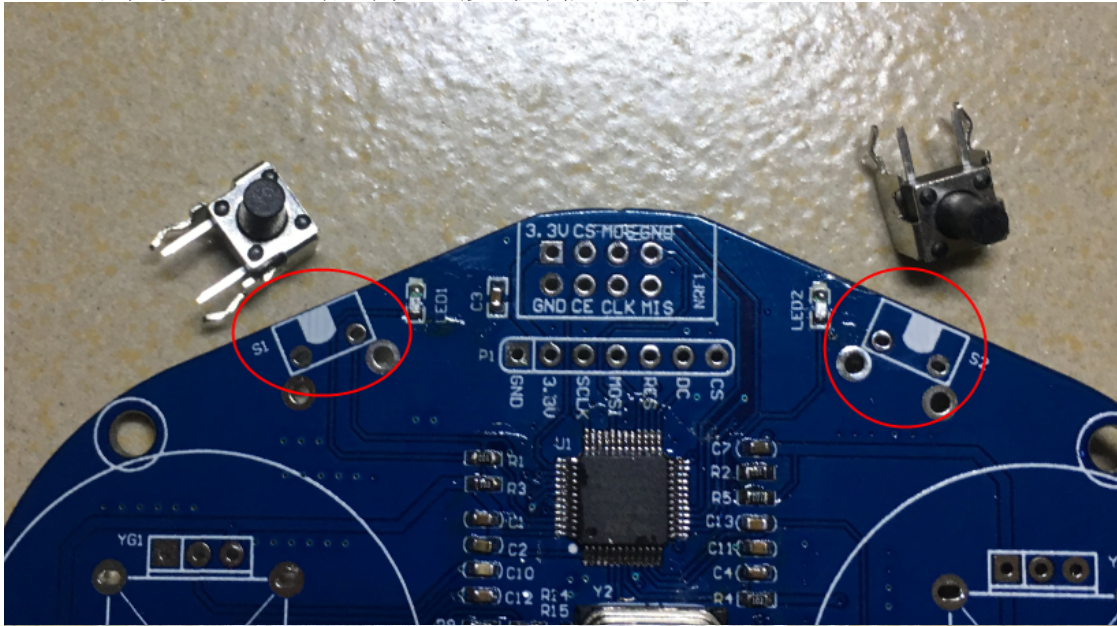




## 18、焊接电池插针 焊接在遥控器背面

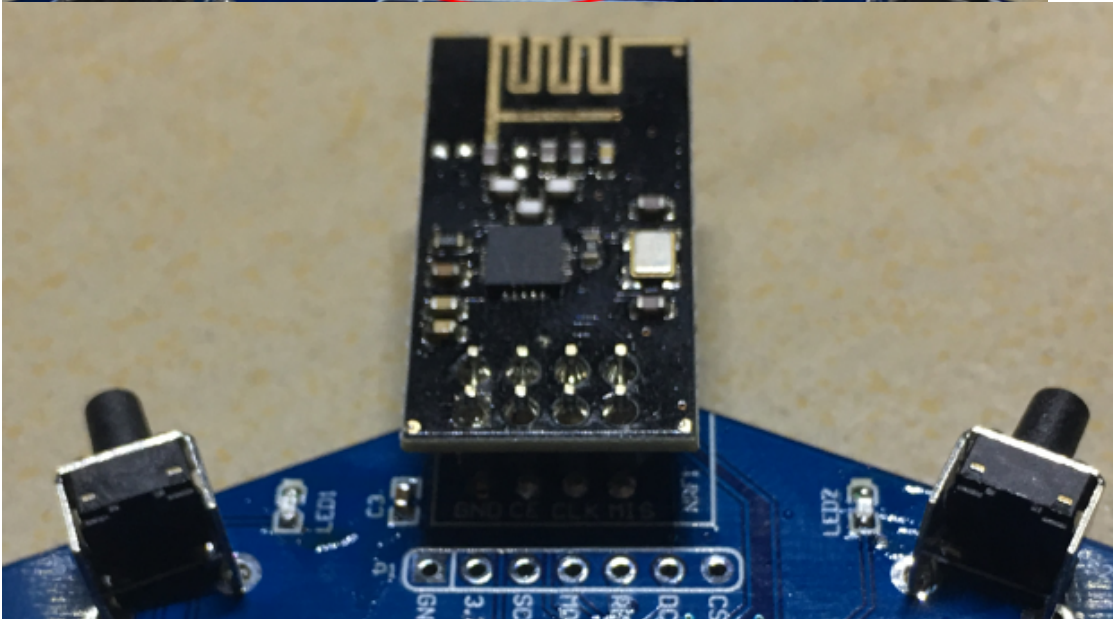
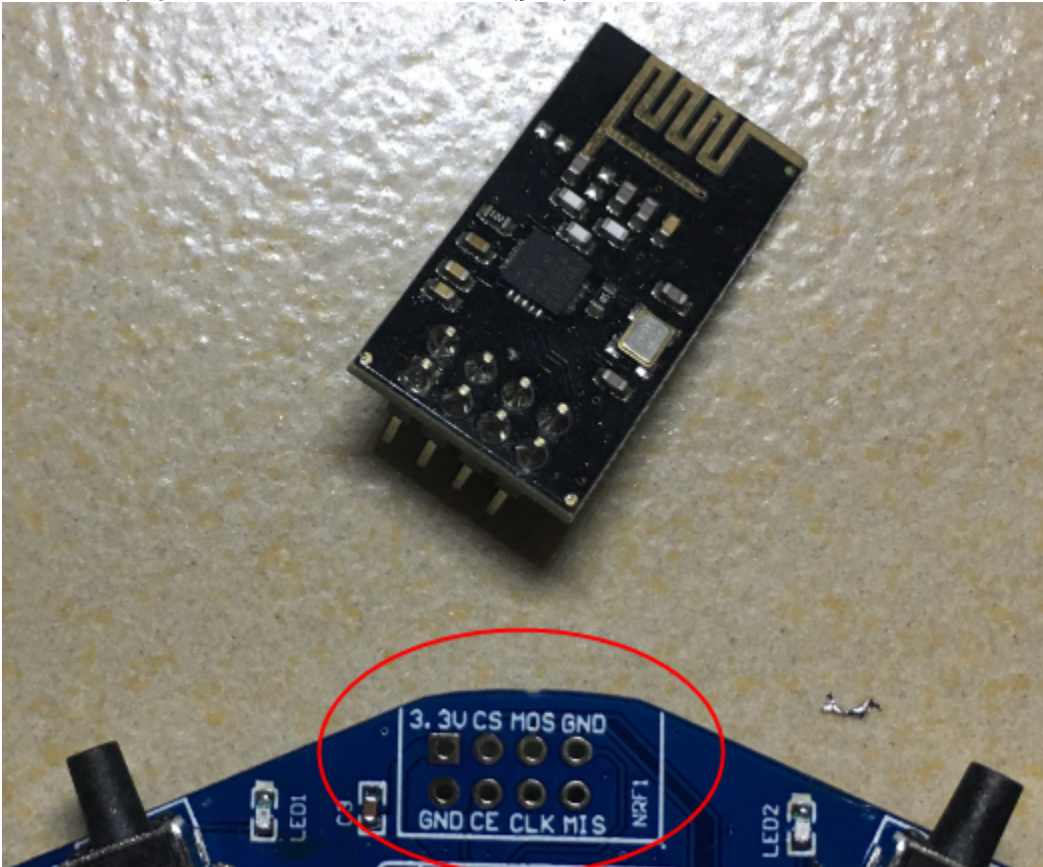


19、焊接6\*6\*9插件90度侧按 按键 S1 S2



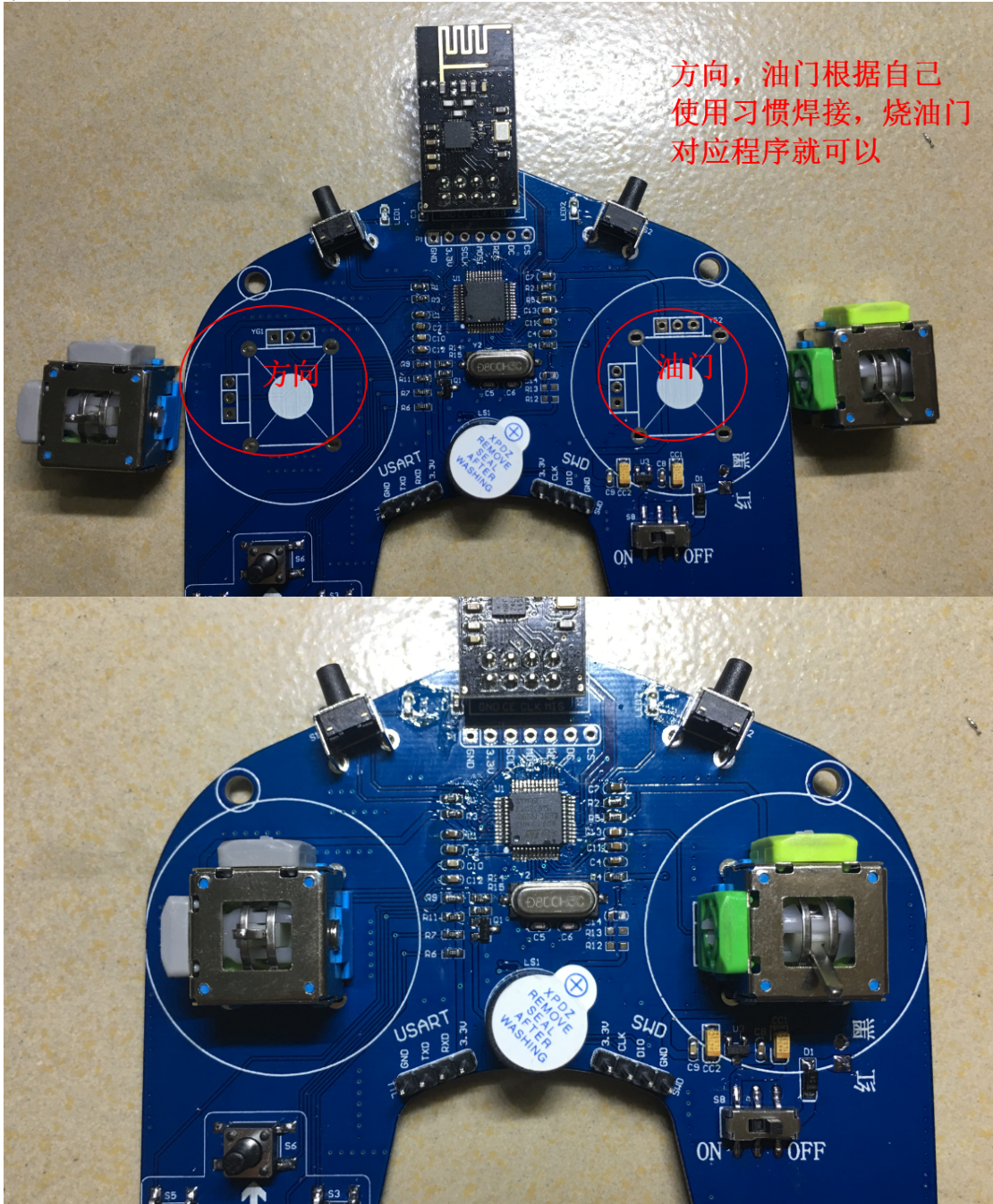


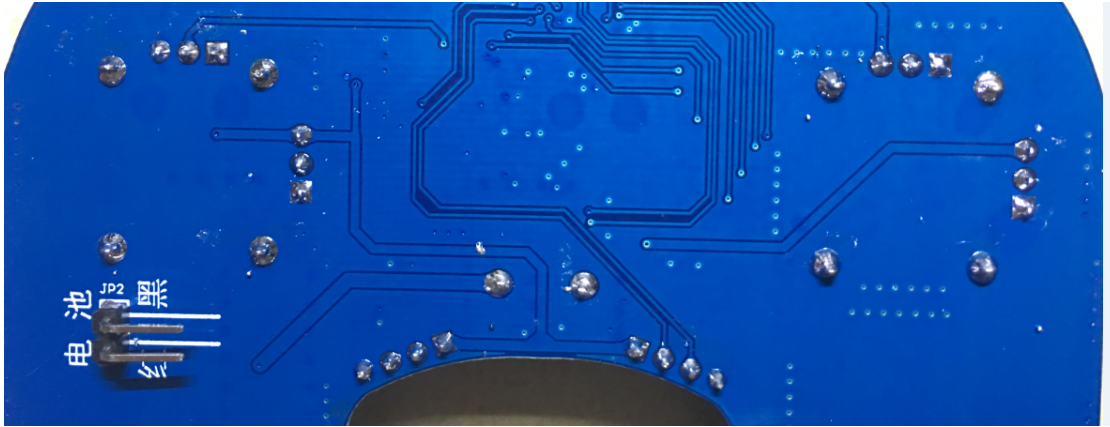
## 20、焊接NRF24L01 2.4G模块 NRF1





21、焊接摇杆，这个根据自己习惯焊接，烧油门的对应程序。





22、焊接完上面的，全部焊接完了，可以烧录程序了



用烧录器连接这个SWD接口烧录

烧录器

SWD排针口

3.3V	-----	3.3V
SWCLK	-----	CLK
SWDIO	-----	DIO
GND	-----	GND

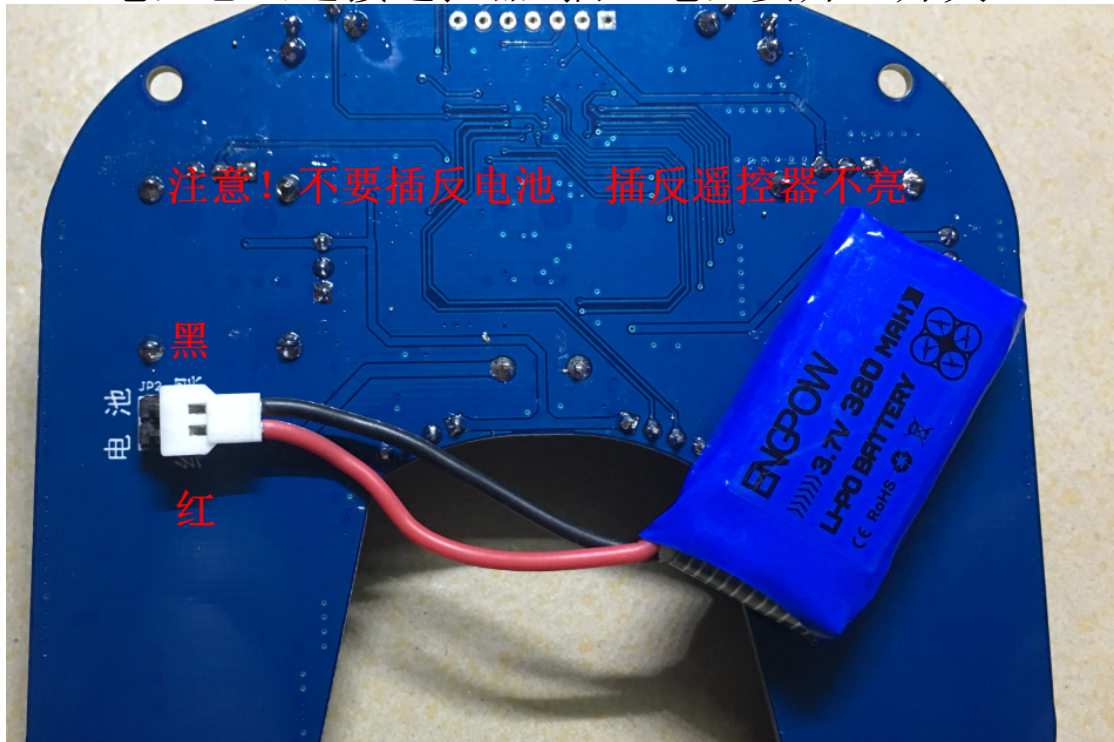
烧录程序看烧录文档！或者百度搜索 STM32程序烧录方法！

STM32的烧录方法都是一样的。SWD调试口烧录！

烧完程序后 通电蜂鸣器响一声 红色LED亮 按按键蓝色LED闪烁！这样就烧录成功了！



### 23、电池怎么连接遥控器 插上电池要开SB开关







## 24、安装 按键帽



## 25、摇杆帽安装







26、到这步遥控器已经全部焊接安装完成了，配焊接好的飞机就可以起飞了！

在这里祝你焊接组装成功！焊接技术提升。学业有成！

谢谢您的支持！